

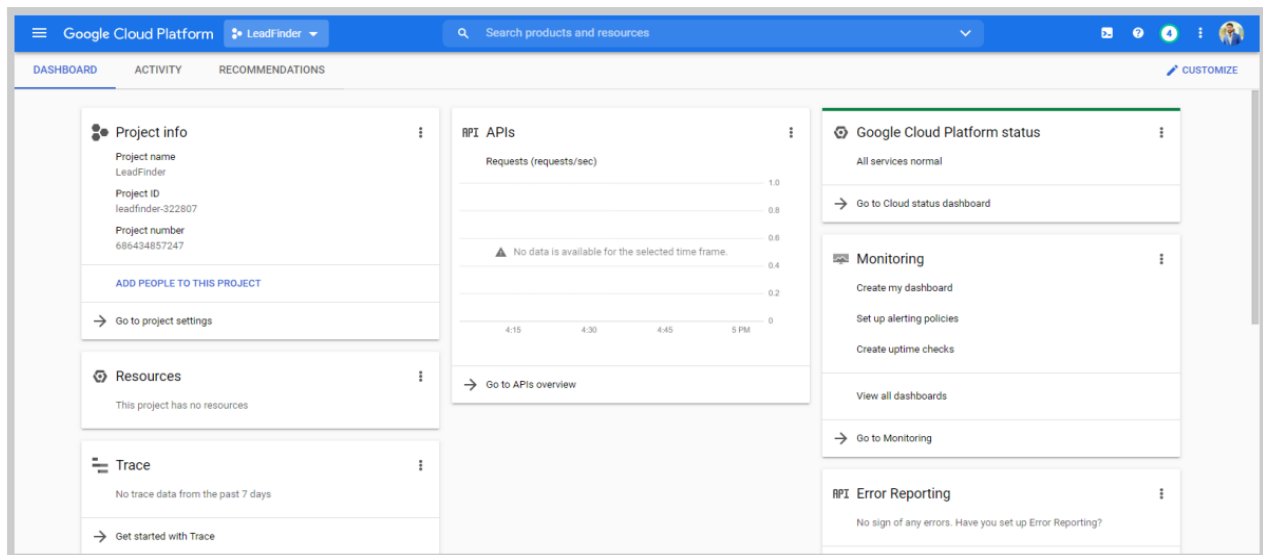


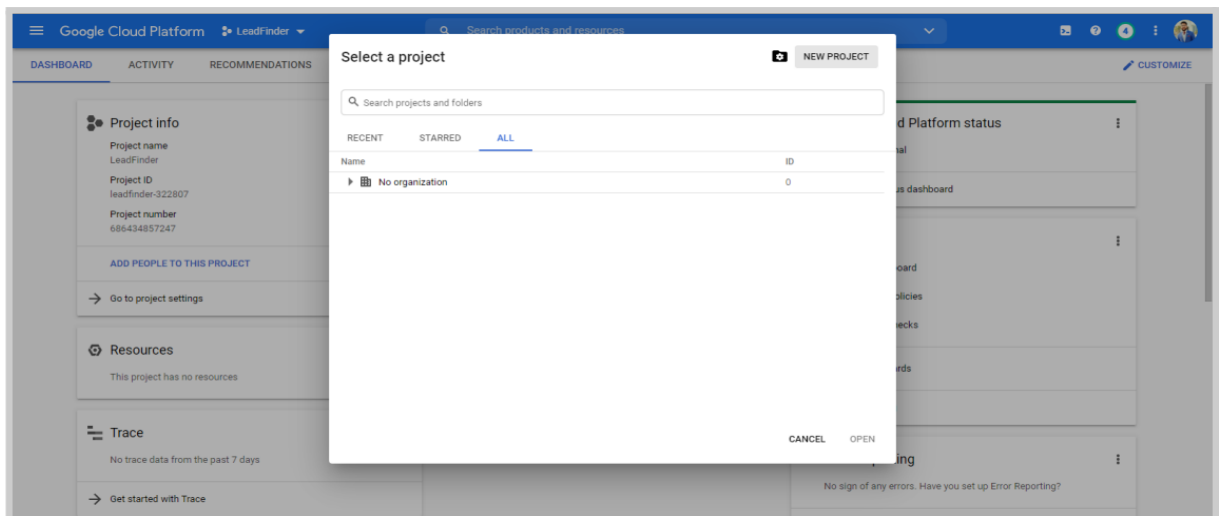
Google Maps API Guide

We provide complimentary Google API Key with the Extension but this Key will Expire in **10-Days** after extension Installation, so It is mandatory to Setup your Google API key to use this Extension. We will send you an alert **3-Days** prior to your trial expiration to keep you informed.

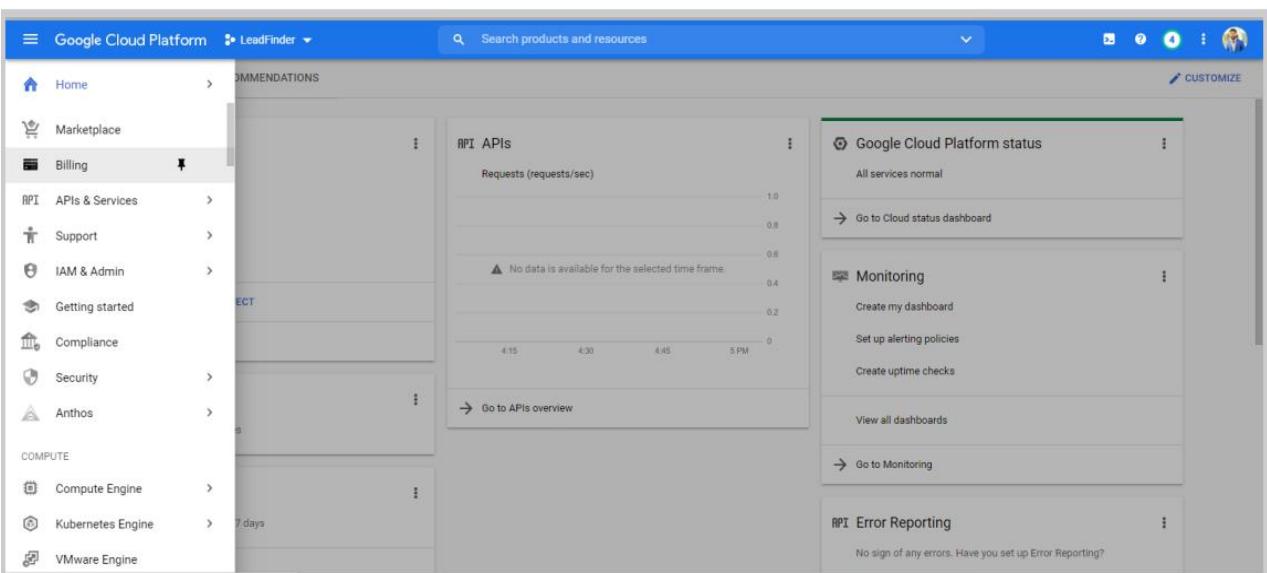
Follow the below mentioned steps to get your **Own Google API key**.

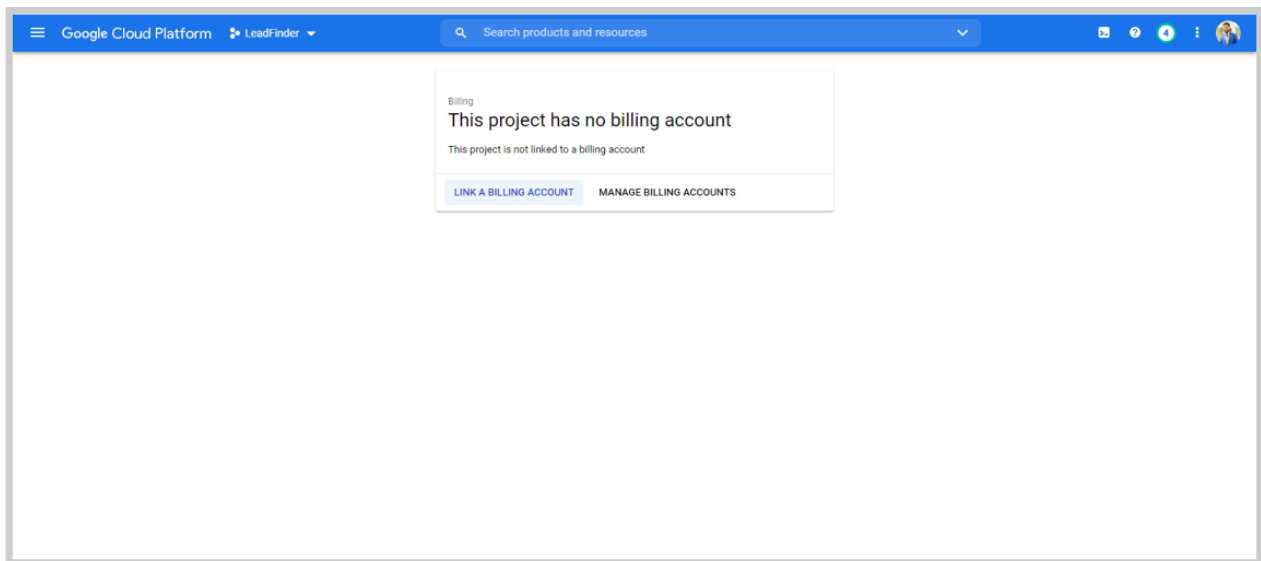
1. Log in to your Google account, open this link: <https://console.cloud.google.com/> and create a new project.



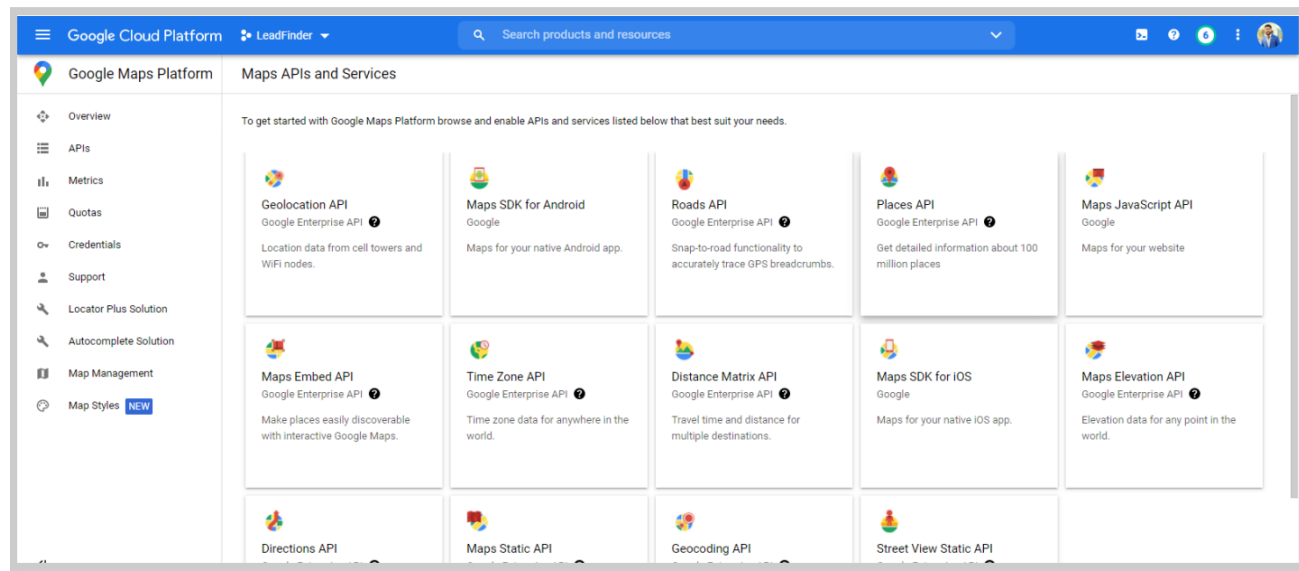
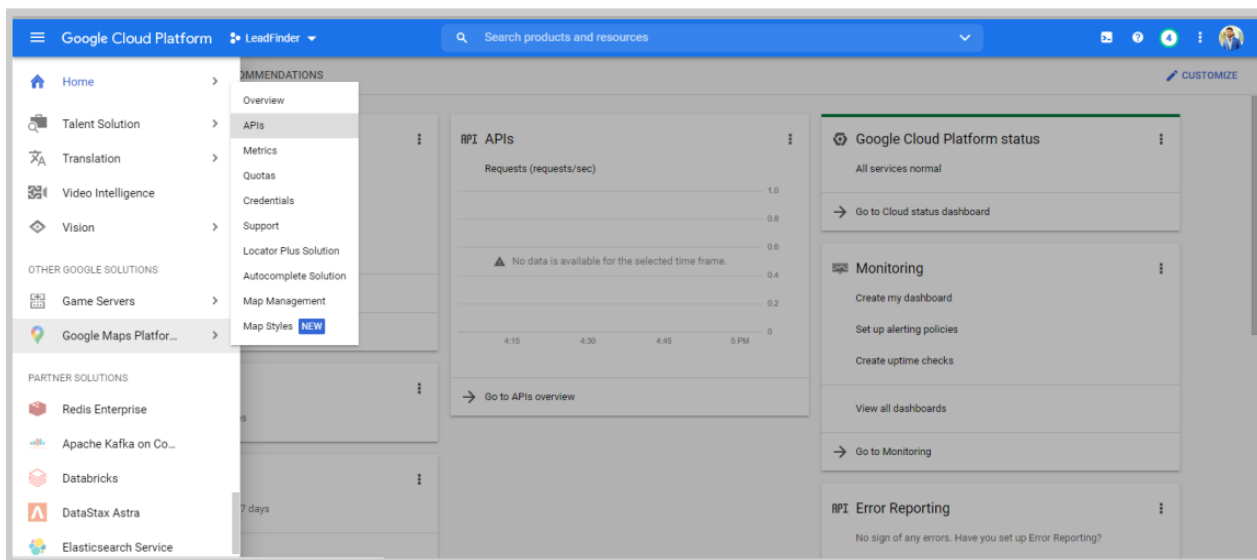


2. Select the newly created project, Navigate to **Billing** and set up your **Billing Account**, your API key will only work if you have successfully linked a billing account to your project.





3. After Linking your billing account, Navigate to **Google Maps Platform > APIs and Enable**
 - i. **API Google Places New**
<https://console.cloud.google.com/apis/library/places.googleapis.com>
 - ii. **Google Places OLD**
<https://console.cloud.google.com/apis/library/places-backend.googleapis.com>
 - iii. **Google Geo-coding API**
<https://console.cloud.google.com/apis/library/geocoding-backend.googleapis.com>
 - iv. **Google Maps API**
<https://console.cloud.google.com/apis/library/maps-backend.googleapis.com>



← Product details

Places API (New)

[Google Enterprise API](#)

Next generation of the Places API with access to more than 200 million places

[ENABLE](#)
[TRY THIS API ↗](#)

[OVERVIEW](#)
[PRICING](#)
[DOCUMENTATION](#)
[RELATED PRODUCTS](#)

Overview

The new version of the Google Places API gives you access to more than 200 million businesses and points of interest, including an expanded list of place details and types. Show users new place attributes such real-time data for EV charging stations, wheelchair accessible establishments, and whether a restaurant allows dogs. Updates also include an enhanced search experience, modern security with OAuth-based authentication, and simplifications to pricing.

Additional details

Type: [SaaS & APIs](#)
 Last product update: 10/26/23
 Category: [Google Enterprise APIs](#), [Maps](#)
 Service name: places.googleapis.com

← Product details

Places API

[Google Enterprise API](#)

Get detailed information about 100 million places

[MANAGE](#)
✔ API Enabled

[OVERVIEW](#)
[DOCUMENTATION](#)
[SUPPORT](#)
[RELATED PRODUCTS](#)

Overview

Get data from the same database used by Google Maps. Places features over 100 million businesses and points of interest that are updated frequently through owner-verified listings and user-moderated contributions.

[Place search](#) ↗ Return a list of places based on a user's location or search string.

[Place details](#) ↗ Return detailed information about a specific place, including user reviews.

[Place autocomplete](#) ↗ can be used to automatically fill in the name and/or address of a place as you type.

[Query autocomplete](#) ↗ can be used to provide a query prediction service for text-based geographic searches, by returning suggested queries as you type.

[Place photos](#) ↗ gives you access to the millions of Place related photos stored in Google's Place database.

[Places SDK for Android](#) ↗ and [Places SDK for iOS](#) ↗ allow you to build location-aware apps that respond contextually to the local businesses and other places near the device.

Additional details

Type: [SaaS & APIs](#)
 Last product update: 3/1/25
 Category: [Google Enterprise APIs](#), [Maps](#)
 Service name: places-backend.googleapis.com

← Product details

Geocoding API

[Google Enterprise API](#)

Convert between addresses and geographic coordinates.

[MANAGE](#) ✓ API Enabled

[OVERVIEW](#) [DOCUMENTATION](#) [SUPPORT](#) [RELATED PRODUCTS](#)

Overview

Convert addresses into geographic coordinates (geocoding), which you can use to place markers or position the map. This API also allows you to convert geographic coordinates into an address (reverse geocoding).

Additional details

Type: [SaaS & APIs](#)
 Last product update: 9/28/22
 Category: [Google Enterprise APIs](#), [Maps](#)
 Service name: geocoding-backend.googleapis.com

Tutorials and documentation

[Documentation](#) [Pricing](#)

Support

[Learn more](#)

Terms of Service

By using this product you agree to the terms and conditions of the following license: [Google Maps Platform](#).

← Product details

Maps JavaScript API

[Google](#)

Maps for your website

[MANAGE](#) ✓ API Enabled

[OVERVIEW](#) [DOCUMENTATION](#) [SUPPORT](#) [RELATED PRODUCTS](#)

Overview

Add a map to your website, providing imagery and local data from the same source as Google Maps. Style the map to suit your needs. Visualize your own data on the map, bring the world to life with Street View, and use services like geocoding and directions.

Additional details

Type: [SaaS & APIs](#)
 Last product update: 9/28/22
 Category: [Maps](#)
 Service name: maps-backend.googleapis.com

About Google

Google's mission is to organize the world's information and make it universally accessible and useful. Through products and platforms like Search, Maps, Gmail, Android, Google Play, Chrome and YouTube, Google plays a meaningful role in the daily lives of billions of people.

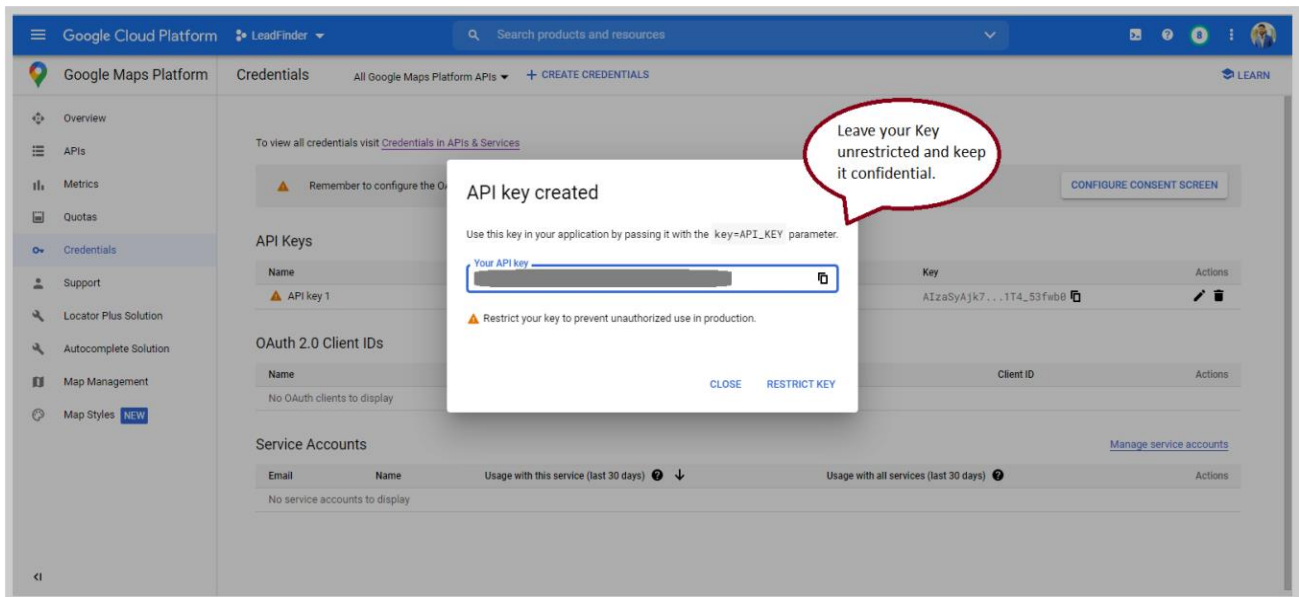
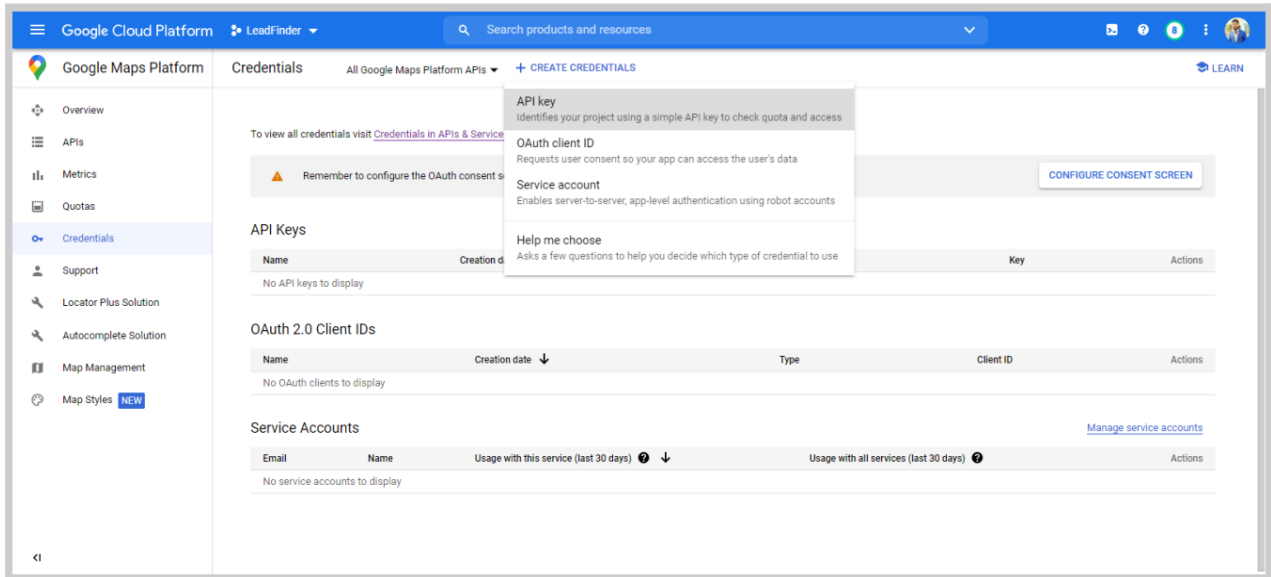
Tutorials and documentation

[Developer documentation](#) [Pricing](#)
 Tutorials, reference docs, and sample code.

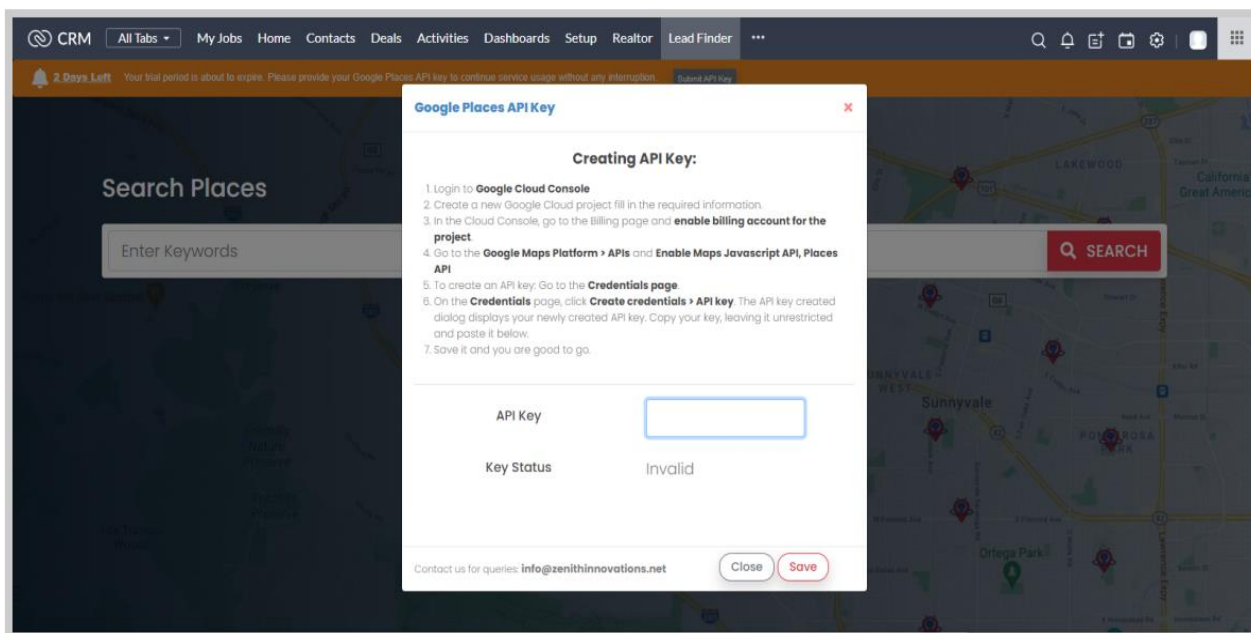
Support

[Learn more](#)

- Once you are done with Enabling all APIs for your newly created project, Navigate to **Google Maps Platform > Credentials > Create Credentials > API Key** and copy your API key (leave the key **unrestricted** and keep it **confidential**).



5. Paste your API key in the Extension and click Save.



In case of any problem in setting up your API key, feel free to contact us at info@zenithinnovations.net

© Zenith Innovations

info@zenithinnovations.net

Office No. 401, Plaza 147,

4th Floor, Civic Center, Bahria Town Phase IV, Rawalpindi.